

Debut PRO Setup Guide

Getting started:

- Make sure to have enough space to unpack your turntable.
- Always unpack and setup in a clean environment.
- Please Do **NOT** throw away the packaging! If you need service or want to return your product, please send it in the original packaging including all inserts. In case of damage due to alternative packaging your dealer cannot guarantee a full refund.
- complete manual: www.project-audio.com/en/product/debut-pro



1 Unpack all items from accessory bag:



- a) Anti Skating Weight / Allen key
- b) Round belt for 78 RPM
- c) Standard flat belt for 33/45 RPM
- d) Adapter for 7" singles / Allen key
- e) Connect it E RCA cable
- f) Gauge
- g) Cartridge alignment protector

2 Remove dust cover carton from the box.



3 Lift the wrapped turntable out of the box.



4 Carefully remove the covering.



5 Unpack the counterweight.



6 Unpack the power supply.



7 Unpack the platter.



8 Put the flat drive belt (c) on the pulley and sub-platter.



9 Put the platter on the turntable.



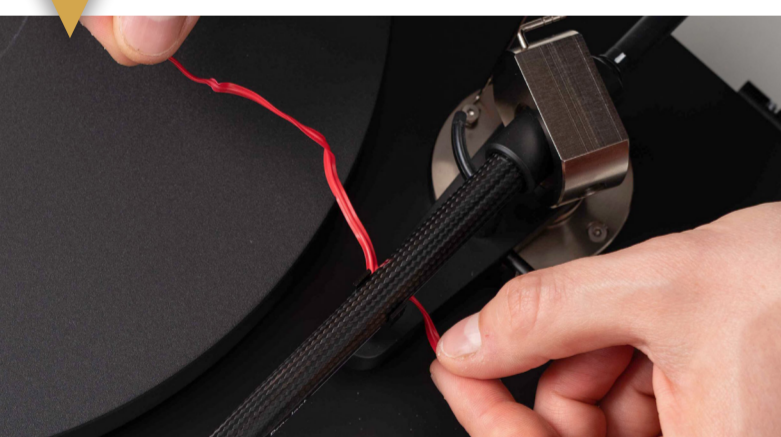
10 The turntable should always be placed on a flat surface. Check with a spirit level.



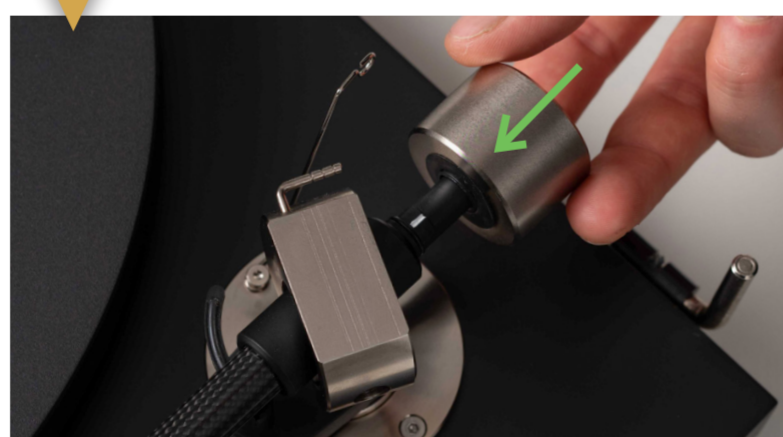
11 If necessary, level the turntable by adjusting the feet.



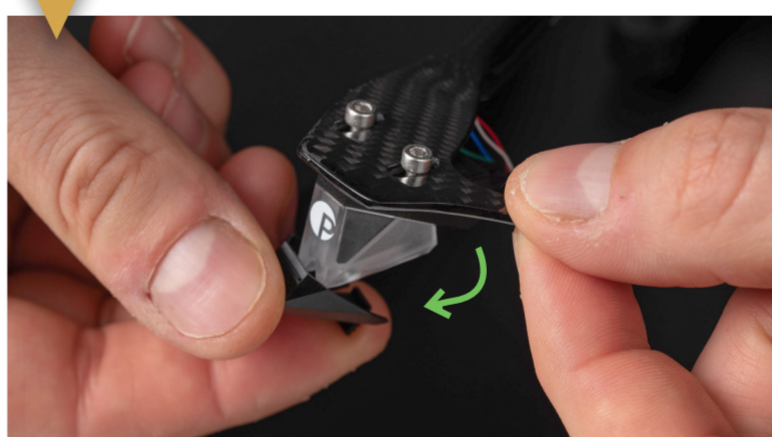
12 Remove tonearm twist tie.



13 Put the counterweight in place.



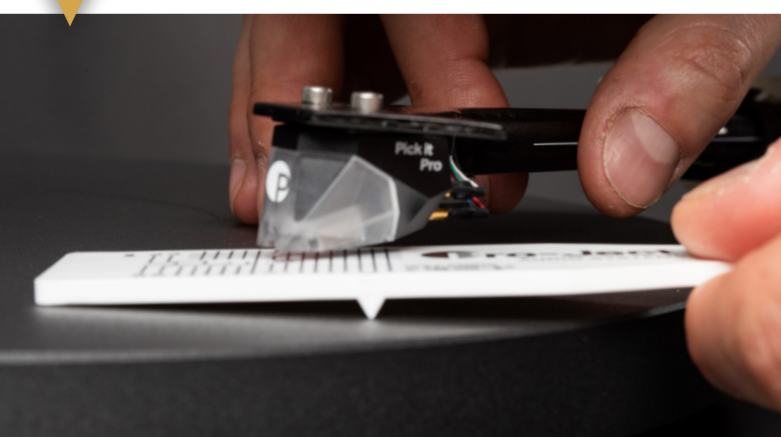
14 Remove the stylus protection cover.



15 Put the gauge (f) on the platter.



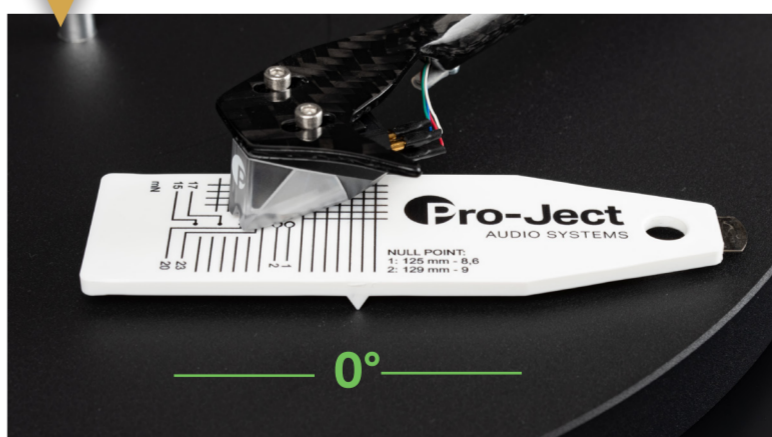
16 Place the stylus on the gauge. The stylus should read 20.



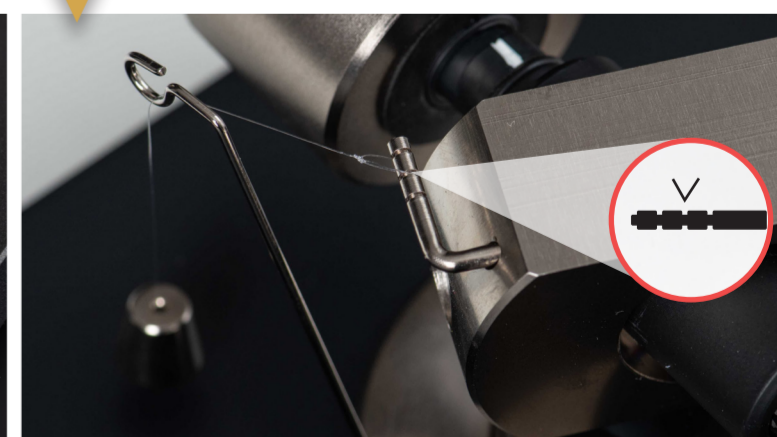
17 Balance the tonearm by turning the counterweight forwards and backwards on the rod.



18 When the gauge stays level, your tracking force is set correct.



19 Put the loop of the Anti Skating Weight (a) in the second notch on the tonearm post.



20 Plug in power supply and Connect it E (e). Yellow cable marks to the amplifier.



21 Unpack dust cover and install it.



22 Use the switch to select the playback speed.



LEFT: 33 RPM
MIDDLE: STANDBY
RIGHT: 45 RPM / 78 RPM

23 Connect to your hifi-system and enjoy your music!



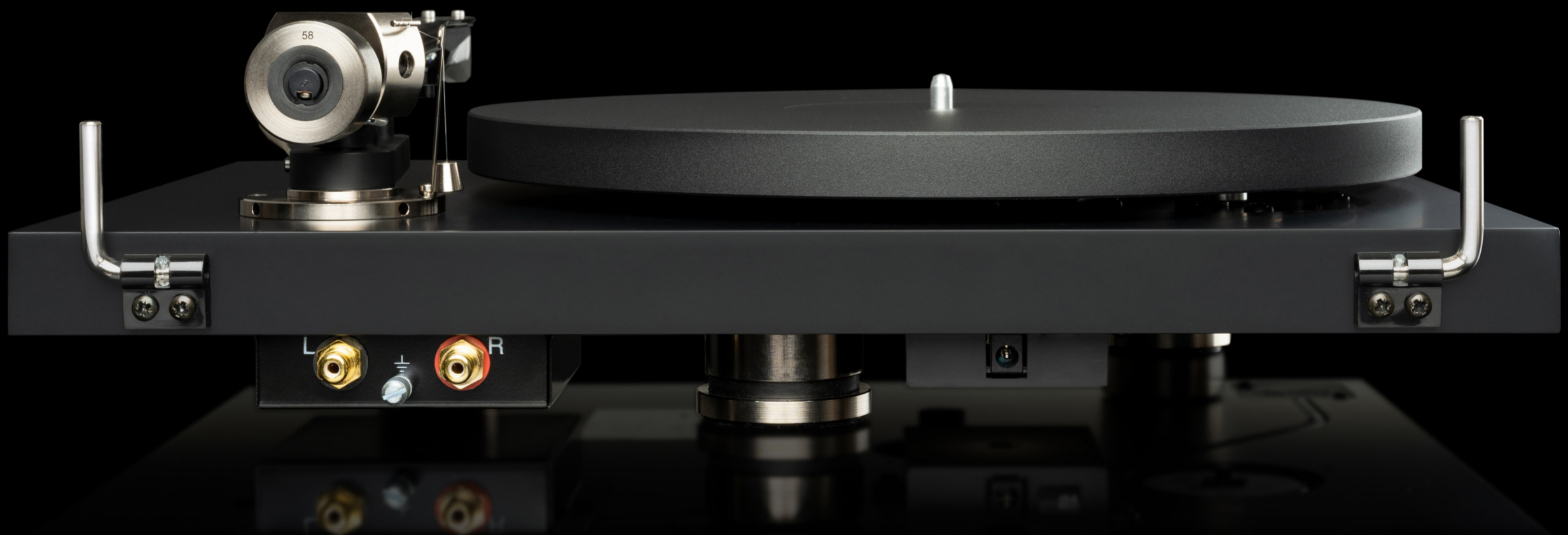
Debut PRO

The instrument everyone can play.



Need help?

Feel free to contact us. We have experienced partners all over the world. Find your dealer here:
www.project-audio.com/en/find-a-dealer/



Service

Should you encounter a problem which you are not able to alleviate or identify despite the above information, please contact your dealer for further advice. Only when the problem cannot be resolved there should the unit be sent to the responsible distributor in your country. Warranty repairs will only be affected if the unit is returned correctly packaged. For this reason we recommend keeping the original packaging. Never return a record player without making sure that it is safely disassembled and correctly packaged in the original packaging according to the diagrams on the last page of this user guide. Please remove these parts and pack them separately: lid, counterweight, anti-skating weight and belt. Fit the cartridge protection cap and the transport lock for the tonearm tube, prior to carefully packaging the record player.

Warranty

The manufacturer accepts no responsibility for damage caused by not adhering to these instructions for use and/or by transportation without the original packaging. Modification or change to any part of the product by unauthorized persons, release the manufacturer from any liability over and above the lawful rights of the customer.

Warranty: Terms and Conditions

- A warranty is valid only for products purchased from an authorized Pro-Ject Audio Systems retailer or dealer.
- This warranty offer is limited to the repair of the equipment (which could be a repair or replacement at our discretion, neither of which affects your original warranty).
- Neither transportation or any other costs, nor any risk for removal, transportation and installation of products is covered by this warranty.
- A warranty is only valid for the original owner. It is not transferable.
- To validate your warranty, you will need to provide the original sales invoice or other proof of ownership and date of purchase.
- Warranty must be claimed within two years of purchase from an authorized dealer. After this period of time, the warranty will expire.
- The legal warranty obligation exists in addition to this warranty and is not limited by this warranty.

A Pro-Ject Audio Systems warranty relates to claims of defects in materials and/or workmanship at the time of purchase. It does not cover:

- Deterioration of component parts, the nature of which is to become worn or depleted with use, such as batteries and headphone ear pads, drive belts and cartridges.
- Damages caused by incorrect installation, connection or packing.
- Damages caused by any use other than the correct use described in the user manual, negligence, modifications, or use of parts that are not made or authorized by Pro-Ject Audio Systems.
- Damages caused by faulty or unsuitable ancillary equipment.
- Damages caused by accidents, lightning, water, fire heat, war, public disturbances or any other cause beyond the reasonable control of Pro-Ject Audio Systems and its appointed distributors.
- Products where the serial number has been altered, deleted, removed or made illegible.
- Repairs or modifications that have been executed by an unauthorized person.

Commercial Use

Faults caused due to using domestic products in commercial environments or on commercial scales are not covered by warranty. This turntable is intended for domestic use only. Using them for business applications are done so at your own risk.

Pro-Ject Audio Systems is a Registered Trademark of H. Lichtenegger.

This guide was produced by: Pro-Ject Audio Systems
Copyright © 2020. All rights reserved.

The information was correct at the time of going to press. The manufacturer reserves the right to make changes to the technical specification without prior notice as deemed necessary to uphold the ongoing process of technical development.

