

LP12 KORE

Contents of upgrade Kit

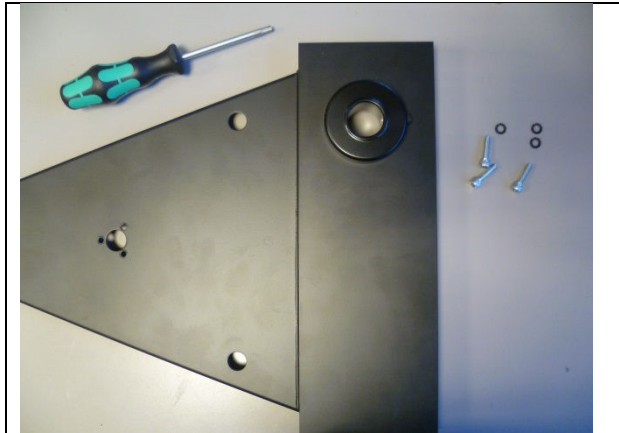


Qty	Description
1	KORE (integrated sub-chassis and arm board)
3	MECH 837 M5 x 20 cap head hex screw
3	MECH 042 M5 shake-proof washer
1	MECH 266 M4 plain washer
1	MECH 794 M3 x 6 Torx pan Inc. s/proof washer

Tools / Equipment required

- LP12 jig
- LP12 bearing cap
- 5/16 AF box spanner (or 8mm socket tool)
- No2 Posidriv screwdriver
- 3mm hex key
- 4mm hex key
- T10 TORX driver

Before you start



- Ensure there is a soft clean surface that can be used to place the Product on without risk of damage.
- Use an LP12 jig to hold the deck whilst working on it.
- Check the bearing and inner platter for signs of wear. If these need replacing do so before commencing the upgrade of the motor.
- Ensure all products are disconnected from the mains, and all cables have been removed.

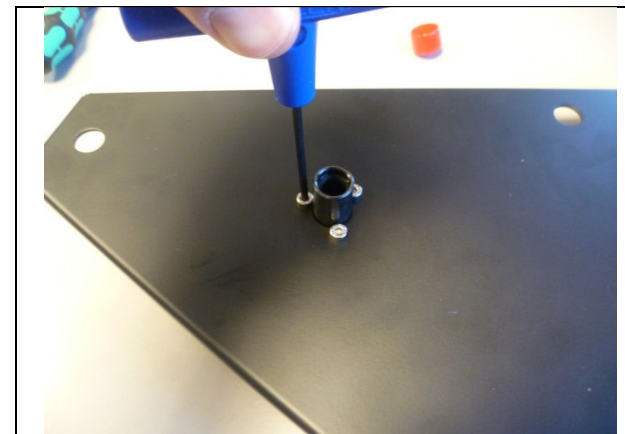
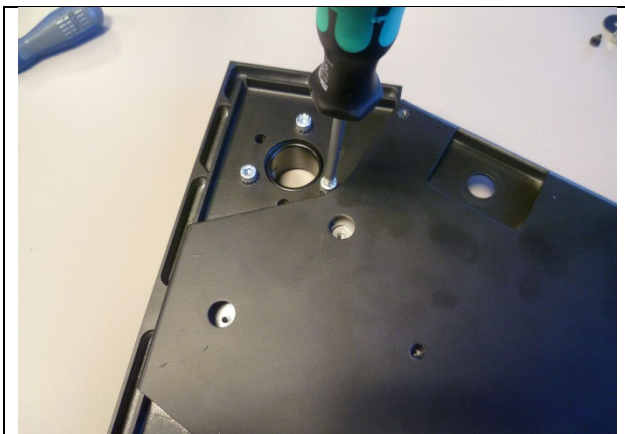
Notes: For purposes of illustration we have stripped the deck down initially

1.

- Remove the current sub-chassis from the LP12, carefully removing and disconnecting the arm (if fitted), connections and wiring strap.
- This install requires the fitment of a Linn arm collar and bearing housing. If re-using parts from an existing LP12, remove them from the old sub-chassis and check for wear before installing on the KORE.

2.

- New shake-proof washers have been supplied with the KORE upgrade kit. These should be installed on the underside of the KORE sub-chassis.
- Position the arm collar concentrically through the KORE, with the collar underside flush against the machined arm board section.
- Ensure the arm collar screw which retains the arm post is positioned so that it faces away from the centre of the LP12.



3.

- Fasten the arm collar to the KORE with the supplied M5 cap head screws and shake proof washers, using a 4mm hex driver.
- Ensure the KORE is placed on a soft surface to avoid damage to the top surface.
- If using a different arm collar such as the Project 9CC, the collar bolts can be screwed directly to the KORE underside or used with the shake-proof washers.

4.

- Take the KORE and fit the bearing housing.
- Remove the bearing cap to allow the bearing housing to pass through the hole.
- Position the bearing housing through the central hole in the KORE, so that the flat section of the bearing housing is flush with the underside of the KORE.

5.

- From the top surface of the KORE, use a 3mm hex tool to screw three M4 x 10 screws into the bearing housing.
- Note these are not supplied in the KORE kit but can be re used from the existing bearing.



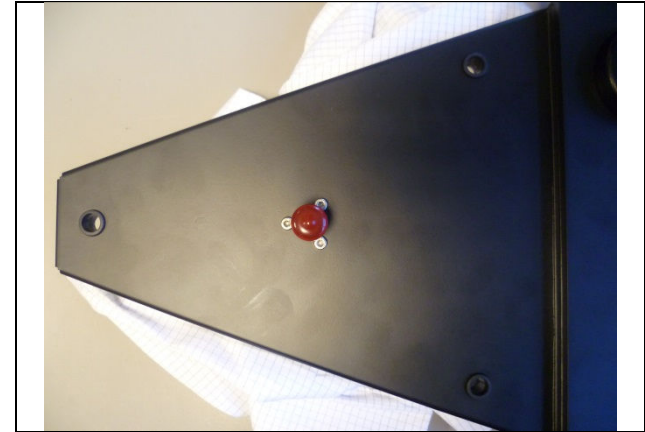
6.

- Replace the bearing cap.



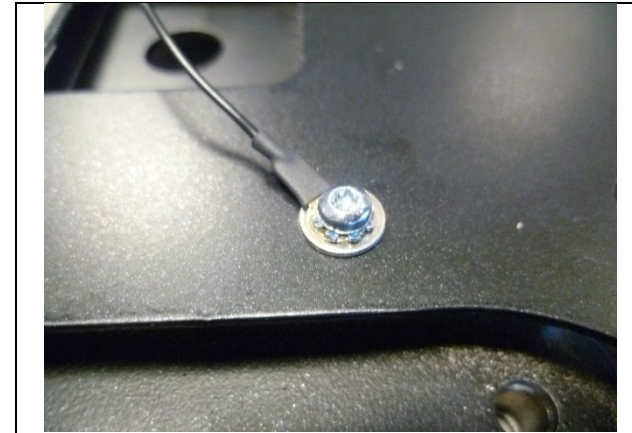
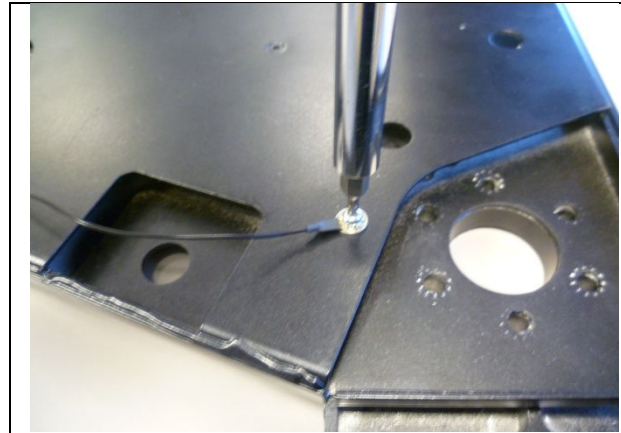
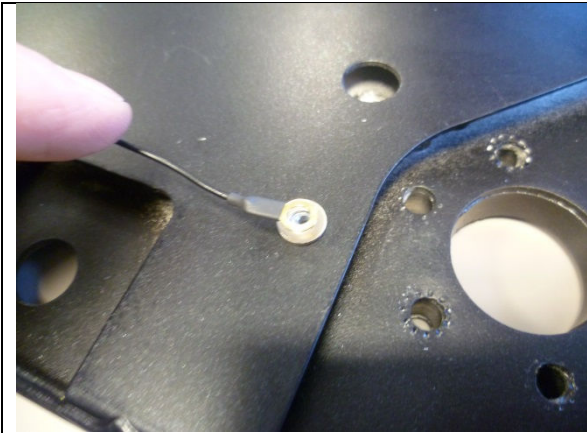
7.

- Remove the rubber grommets from the old sub-chassis and inspect for wear and damage.
- Carefully turn the KORE over, ensuring the bearing cap stays in place.
- Fit the rubber grommets to the underside of the KORE as displayed above.



8.

- Ensure the grommets fully protrude through the top surface of the KORE and are seated correctly.



9.

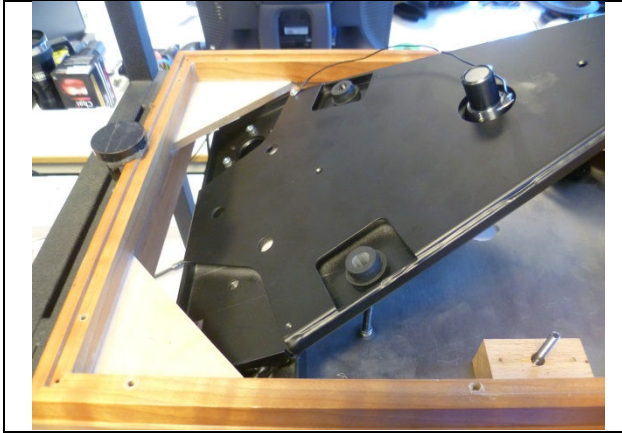
- If not already done, disconnect the earthing cable from the LP12.
- Place the supplied M4 plain washer over the earthing point nearest the arm mounting position.
- Align the small loop of the earthing wire concentrically with the washer and earthing point.

10.

- Using a T10 Torx driver, screw the earthing wire loop and washer onto the KORE with the supplied M3 x 6 Torx screw.

11.

- Before fully tightening the screw, ensure the earthing cable is positioned the correct way to attach to the LP12.
- Note - This screw should be tightened enough to bite into the earthing wire tab with the integrated shake-proof washer.



12.

- Secure the LP12 upside-down in a Linn LP12 jig. (This can be done the other way round if preferred).
- Carefully angle the KORE and slot through the arm board gap, ensuring the arm board, plinth and top plate do not get scratched or dented.

13.

- Carefully lower the sub-chassis section, ensuring that the LP12 suspension bolts pass through the grommets on the KORE.

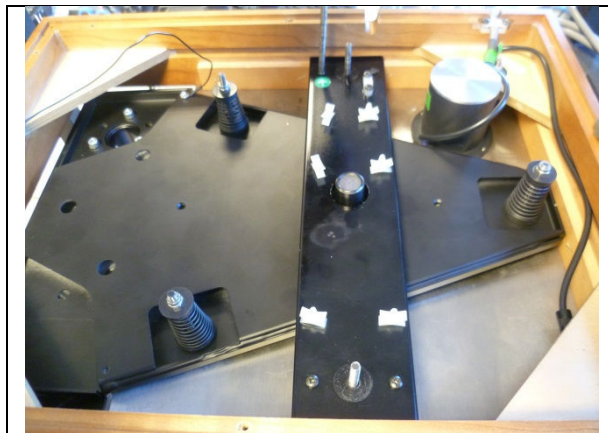
14.

- Fit the springs, small grommets and washers so that they fit over the bigger grommets fitted to the KORE.
- If these parts are being reused, ensure the parts are free from wear and clean of any talc, lubricant or oil which may have been used.
- Note these substances should not be used on the springs or rubber components.



15.

- Fit a nut to each suspension bolt and using an 8mm socket tool or 5/16" box spanner, tighten until the bolt just protrudes the nut.



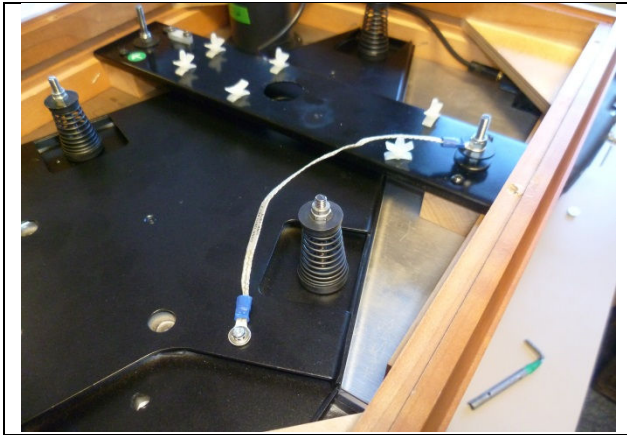
16.

- Reinsert the wiring strap ensuring it is correctly oriented.
- Refit the four wood screws (two at each end).
- Refit the large washers and nuts at both ends of the wiring strap.



17.

- For a standard LP12 connect the earthing wire as shown.



18.

- For a Majik LP12 connect the earthing wire as shown.