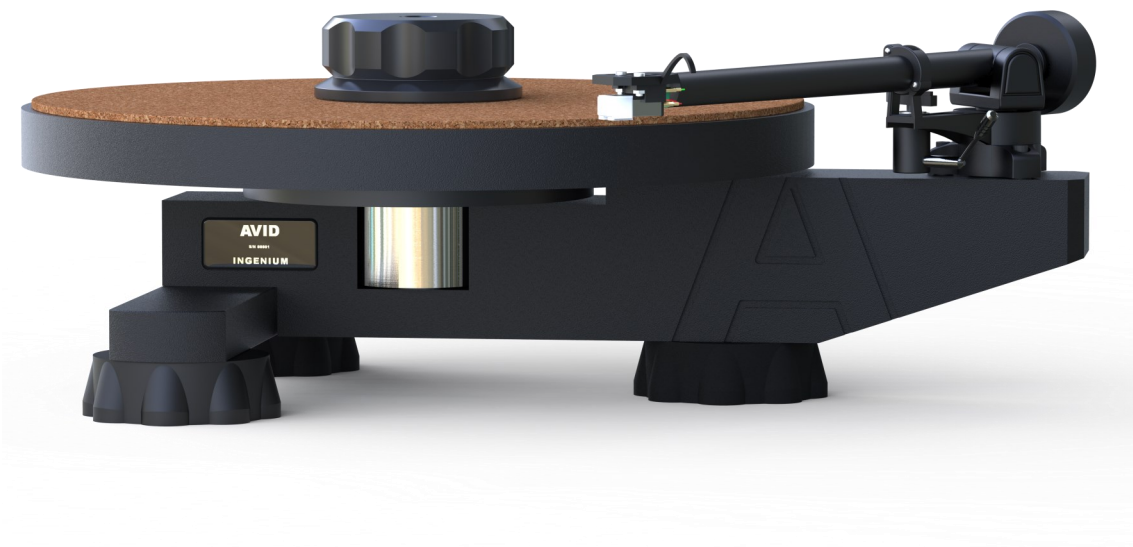




AVIDHIFI

Ingenium Plug&Play Turntable



USER MANUAL

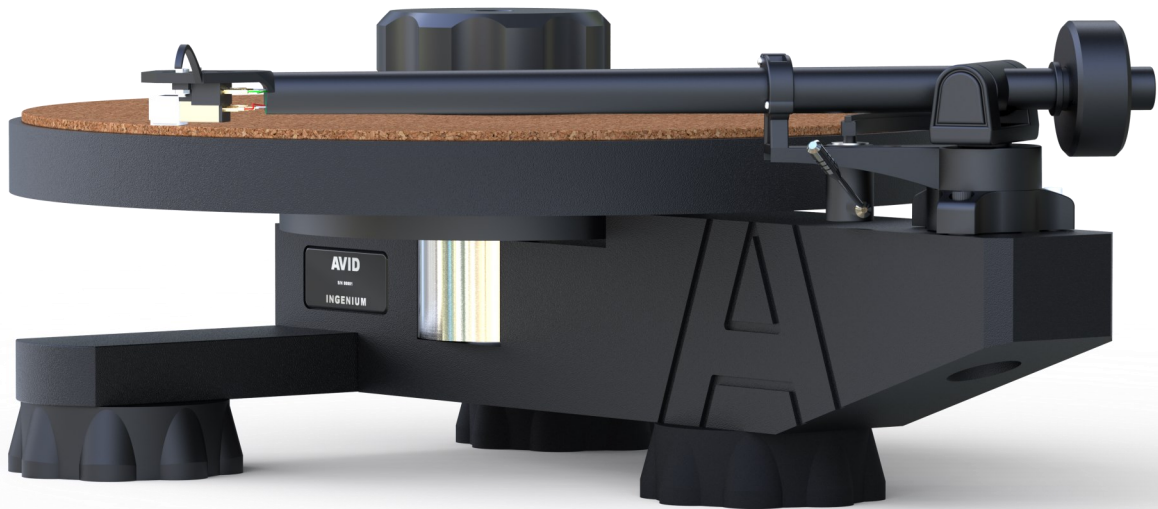
Table of Contents

Topic	Page
Welcome	3
Caution	3
Component List	4
Placement	5
Setting-up:	6
Position the Chassis	6
Inserting the bearing ball	6
Attaching the drive hub	6
The Motor	7
Attaching the platter	7
Changing the platter speed	7
Counterweight	8
Connecting to your system	8
Using the clamp	8
Starting the turntable	8
Troubleshooting	9
Specifications	10
Declaration of Conformity	10
Warranty	11

Extended 5 Year Warranty

AVID is pleased to extend the normal warranty duration to 5-Years from the date of original shipping. This warranty is transferable in the unlikely event that you would sell this unit onto another party. Register your product at;

www.avidhifi.com/register



Congratulations on purchasing your new AVID Ingenium Plug&Play.

By using the highest quality materials and being assembled to the highest industry standards, your AVID Ingenium Plug&Play should provide you with many years of trouble-free enjoyment.

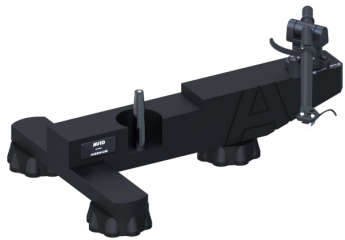
Please read this manual carefully to ensure you understand all the features and operating functions available.

Caution

- **Turntables, tonearms and cartridges are fragile items, please take extreme care when moving, setting-up and using them.**
- **When cleaning, use only a soft, lint-free cloth. Take special care not to damage the cartridge and its delicate stylus assembly.**
- **Always clip the tonearm back into its rest when changing records, to minimise the risk of damaging the cartridge.**
- **Keep all packaging—you will need them if you need to return the item for service or upgrade at a later date.**

Component List:

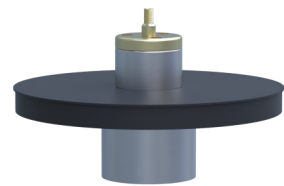
Before assembling your Ingenium please check that, along with this manual, you have all the parts as listed below. If any items appear to be missing, please contact your dealer immediately.



Chassis with arm/cartridge



Record Clamp



Hub/bearing Assembly



Motor



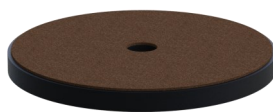
Tonearm Counterweight



Bearing Ball



Drive belt



Platter

Placement:

By their nature, turntables are sensitive devices. They are designed to retrieve the smallest vibrations and convert them to sound. Unfortunately this means that they are also very good at picking up vibrations you don't want to hear, such as the footsteps of someone walking past the turntable.

Most turntable manufacturers attempt to minimise this problem—the Ingenium Plug&Play uses a combination of its high mass along with its compliant feet to create an effective isolation system.

These features can only do so much. Where, and on what you place the turntable is of even greater importance. With this in mind, we would make the following observations regarding the placement of your turntable:

- 1: The turntable must be on a level, stable platform:

A rigid shelf or table is acceptable, a dedicated support is generally best

Keep the unit away from other high power devices—power amplifiers tend to have large magnetic fields and are also a source of heat, both of which can adversely affect the performance of your turntable.

Lightweight supports generally work best, as they store less energy, and therefore put less unwanted energy back into the turntable—a wall mounted shelf is often best, as this is unaffected by common floor vibrations.

- 2: Avoid placing the turntable near the loudspeakers—this could affect the sound quality, and even induce feedback when played at high levels.
- 3: Position the turntable where you can get easy access to it, and its component parts—you may need to remove the platter from time-to-time to gain access to the motor, so putting it in a cupboard may prove impractical.
- 4: Do not leave the turntable exposed to heat and direct sunlight, this may affect the cosmetic finish of the unit over time, and will potentially cause warping of records that are on the platter.

Setting-up:

Prepare the area where you plan to locate the turntable—make sure you have plenty of space around it to give you easy access.

We recommend the following sequence to assemble your Ingenium Plug&Play turntable.

Position the chassis

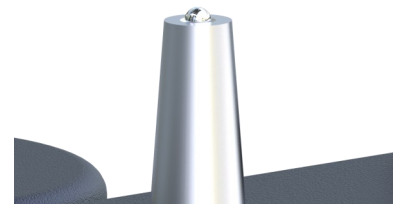
The main chassis comes ready-assembled, with its feet, arm and cartridge in place. Place the chassis on the surface you intend to use the turntable. Position the chassis so that the tonearm and cartridge are easy to access, and there are no objects that may interfere with the free movement of the arm.



Inserting the bearing ball

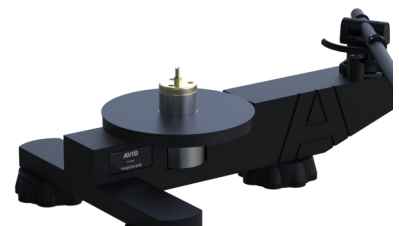
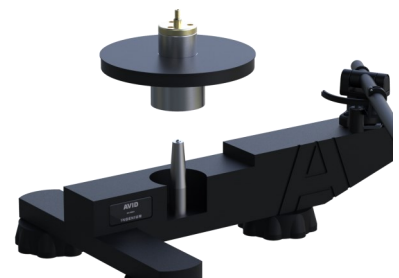
Before assembly, clean the conical recess on the top of the shaft using a soft lint-free cloth. Place the bearing ball into the recess. **The bearing ball must be in place before continuing, otherwise permanent damage will be done to the sapphire.**

NEVER PUT ANY LUBRICATION ON THE SAPPHIRE OR BEARING BALL AS THIS WILL CAUSE DAMAGE.



Attaching the drive hub

Remove the clamp from the bearing assembly by unscrewing it with an anti-clockwise action. Store the clamp safely. Carefully lower the bearing assembly over the shaft—**do not allow the assembly to drop onto the shaft, as this will shatter the Sapphire bearing.** Once the bearing is in place, the bearing should initially spin freely, but once fully lubricated will cause drag, slowing the hub quite quickly—this is normal.



The Motor

The motor needs to be located to the rear of the chassis. The centre of the motor spindle should be approximately 97mm (3 ¾") away from the centre of the hub assembly.

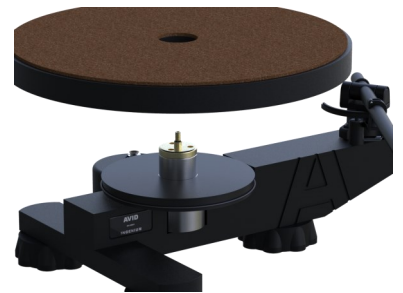
Take the drive belt, and place it around the hub, and then stretch it over the motor pulley.

EVERY TIME YOU FIT THE DRIVE BELT—MANUALLY ROTATE THE DRIVE HUB BY HAND TO ALIGN THE DRIVE BELT.



Attaching the Platter

The platter fits over the hub assembly. Gently lower the platter over the hub assembly being careful to align the centre hole with the hub. You should take extra care if you have chosen to use the optional upgrade metal platter.



Changing the Platter Speed

The motor pulley has two grooves into which the belt can be placed—the larger diameter groove is for playing 45RPM records, and the smaller plays at 33.3RPM.

Any time you want to change the turntable speed, simply remove the platter (push down on the spindle, so that it disengages from the platter) and reposition the drive belt, replace the platter and rotate manually to align drive belt.

The turntable speed has been calibrated at the factory. You can accurately check the speed of the platter by using a strobe disk. A small speed adjustment is possible by altering the distance between the motor and the drive hub.

Stretching the belt slightly will slow the platter, whilst releasing the tension will introduce an increased speed. However, if the belt is too loose, it will start to slip, resulting in a wowing sound. Conversely, if the belt is too tight it will cause the speed will slow. Some experimentation in this area is required for critical adjustment.



Counterweight

The Ingenium comes with a cartridge already installed. Before playing any records, you must attach the counterweight; this ensures the cartridge is played at the correct tracking weight.

Using a twisting action, gently push the counterweight onto the rear of the tonearm until it reaches the stop, and cannot be pushed further—the tracking weight is now correctly set.



Connecting to your System

This turntable uses a conventional Moving Magnet cartridge, which is designed to work with the majority of amplifiers with a built-in phono stage. If your amplifier does not have a phono stage, you will need to acquire an external device. AVID produce a range of suitable phono stages.

Please consult the amplifier or phono stage instructions supplied by the manufacturer to correctly fit the tonearm cables. Also note the earth connection is integrated into the tonearm lead and there is no separate earth connection lead usually required.

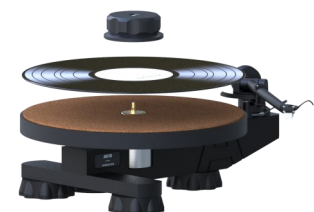
Once you have connected your turntable to your amplifier, the turntable is ready to be used.

Using the Clamp

Your Ingenium comes with a record clamp—this is designed to minimise any warps in the record, but also to help control vibrations within the record that adversely affect sound quality. The clamp should be used at all times.

Simply place the record over the spindle and then screw the clamp onto the spindle. **< IMPORTANT > Do this carefully to avoid cross threading which will cause damage.** Do not use excessive force—hand-tight is more than adequate.

ALWAYS STOP THE TURNTABLE WHEN CHANGING THE RECORD



Starting the Turntable

You start the turntable by using the switch on the mains cable.

TROUBLESHOOTING

The Ingenium Plug&Play is intentionally a straight-forward turntable, making set-up and use very simple. Occasionally though, you may come across a problem, if so, please read the following to help find a solution

Fault	Solution
Turntable platter not rotating	<p>Check that the mains plug is correctly fitted and switched 'on', and that the in-line mains switch is also 'on'.</p> <p>Check that the drive belt is fitted correctly around the hub and motor pulley and that the motor is correctly positioned.</p> <p>Check that the Platter is free to turn, and that no foreign object may be jamming it.</p>
No, or very quiet sound	<p>Check that the tonearm leads are connected to the amplifier, and that the correct input is selected.</p> <p>This turntable requires an amplifier with a built-in phono stage, or an optional external one. It will not function if connected directly to a standard line-level input.</p>
Loud humming noise coming from speakers	<p>This is probably the result of an earth issue, and is best resolved by discussing the issue with your dealer.</p>
Turntable running slightly fast or slightly slow or varying	<p>Adjust the tension of the belt by moving the motor. If the speed randomly varies, try removing the belt and cleaning it with a dry lint-free cloth to remove any contaminants.</p>
Distorted sound	<p>Carefully, clean the stylus—use a stylus cleaning brush to remove any build up of dust and fluff. Remember the stylus will eventually wear, and should be replaced (with normal use, every one to two years). Using a worn stylus will result in poorer sound quality, and eventually permanent damage to your records.</p>

If you ever have any issues with your AVID equipment that you are unable to resolve yourself, please, in the first instance, contact your dealer.

Specification

CARTRIDGE DETAILS

Type	Moving Magnet
Output	2.5mV
Tracking Weight	2 Grams
Phonostage Loading	47k

POWER CONSUMPTION

Input voltage (region dependent)	120V or 240V AC
Power Consumption (Max)	<4 Watts

DIMENSIONS AND Weights

(W x D x H) :	500 x 420 x 265mm
Weight:	9 Kg

EC DECLARATION OF CONFORMITY

We the Manufacturer, **AVID HIFI Limited**

Bicton Ind. Park, Kimbolton, Cambridgeshire. PE28 0LW (UK)

TEL: +44 (0)1480 869900 / Email: info@avidhifi.co.uk / Web: www.avidhifi.com

Acknowledge our sole responsibility, that the product:

KIND OF EQUIPMENT: **Turntable/Record Player**

TYPE DESIGNATION: **INGENIUM** (All Variants)

In accordance with the EMC Directive **2014/30/EU** is in compliance with the following norm(s) or document(s):

Technical regulations: **EN 55032:2015+AC:2016 / EN 55035:2017 EN 61000-3-2:2014 / EN 61000-3-3:2013**

&

In accordance with the Low Voltage Directive **2014/35/EU** is in compliance with the following norm(s) or document(s):

Technical regulations: **EN 62368-1:2014**

&

Is in conformity with Directive **(EU) 2015/863** Restriction of Hazardous Substances in electrical and electronic equipment.

Conrad Mas (Managing Director)

Date: **4th January 2021**

Warranty Statement UK Residents

AVID HIFI Limited products are warranted against defects in materials and workmanship for a period of two years from the original date of purchase, or no later than three years from the date of shipment to an authorized **AVID** agent, whichever ever comes first, extending to five years subject to the product owner having submitted the Registration form (www.avidhifi.com/register). Also the following conditions being observed.

- The product must have been purchased through an authorized **AVID** dealer
- By default, the warranty is in favour of the original purchaser only, however warranties are transferable providing the new owner completes the online product registration form. In this case, warranty obligation will pass from dealer to manufacturer.
- During the warranty period, **AVID** will repair, or replace any defects due to material or workmanship, without charge for parts or labour.
- Should product need to be returned, a written description of the defect and a photocopy of the original purchase receipt must accompany it. Receipts must show the model, serial number, date of purchase, name and address of purchaser and authorized dealer and the price paid.
- Returned product must be packed in the original packing and returned to **AVID** or original dealer by the customer at his/her expense. **AVID** will pay return freight of its choice.
- The warranty is void if the product has been used or handled other than in accordance with the instruction manual supplied, abused or misused, damage by accident or neglect or in being transported, or the defect is due to the product being repaired or tampered with by anyone other than **AVID** or an dealer with prior authorization.
- The warranty is void if the product serial number has been removed, altered or made illegible.
- The warranty is void if the product has been taken out of the country of purchase.
- **AVID** shall not be held liable for incidental or consequential damages of any kind arising from the sale or use of its products.
- The warranty applies to ex-demonstration product, using manufacture date as purchase date.
- Where the product is sold under a consumer transaction (as defined by the Sale of Goods Act 1979) the statutory rights of the purchaser are not affected by this warranty.
- Products are sold on the basis of specifications applicable at the time of sale. **AVID** shall have no obligation to modify or to update products once sold.

Outside UK

AVID has formal distribution in many countries throughout the world. In each country the **AVID** importer has contractually accepted the responsibility for the product warranty. Warranty should normally be obtained from the importing agent or distributor from whom you obtained your product. In the unlikely event of service required beyond the capability of the importer, **AVID** will, of course, back up the warranty.

- Where product has been either supplied directly or there is no current distributor, **AVID** accepts responsibility for the warranty period. Returned product must be packed in the original packing and returned to **AVID** by the customer at his/her expense. **AVID** will pay return freight of its choice. The warranty is only valid in the country of purchase.
- Products outside their original destination requires that units with remaining warranty be returned to the country of purchase for the warranty to be valid. Customer is responsible for freight both ways and all associated import and export charges.
- Foreign distributors are not required to provide warranty service, repair or change AC mains voltage on units that they did not originally import and sell.
- Foreign distributors may at their discretion offer service for a fee.

MISCELLANEOUS. ANY IMPLIED WARRANTIES RELATING TO THE ABOVE PRODUCT SHALL BE LIMITED TO THE DURATION OF THIS WARRANTY. THE WARRANTY DOES NOT EXTEND TO ANY INCIDENTAL OR CONSEQUENTIAL COSTS OR DAMAGES TO THE PURCHASER.

WARRANTOR. Inquiries regarding the Limited Warranty may be sent to the following address:
AVID HIFI Limited. Bicton Industrial Park, Kimbolton, Huntingdon. PE28 0LW ENGLAND



AVIDHIFI



AVID HIFI Ltd

Bicton Industrial Park,
Kimbolton, Huntingdon,
Cambridgeshire.
PE28 0LW
ENGLAND

Tel: +44(0)1480 869 900 — Website: www.avidhifi.com - Email: info@avidhifi.co.uk

Company Registered No: 5435528 — VAT Registration No: GB 694 9858 48 — Directors: C. Mas & S.J. Mas

Updated 23rd November 2021